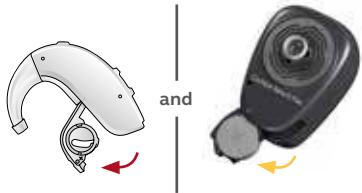


Wireless pairing & streaming guide

Microphone – pairing with ReSound hearing aid and Baha sound processors

Note: When bimodal pairing, first ensure hearing devices are programmed to opposite ears.

- 1 Turn off ReSound hearing aid and Baha sound processor



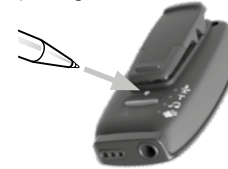
- 2 Turn on ReSound Multi Mic or Cochlear Mini Microphone 2/2+

Note: Ensure microphone is charged.

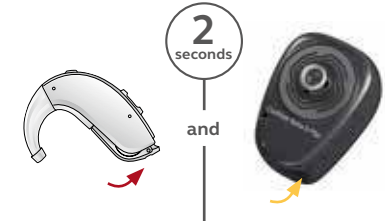


- 3 Press pairing button once for channel 1, twice for channel 2, three times for channel 3

Note: The LED will flash yellow for 20 seconds while device is in pairing mode.

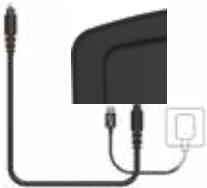


- 4 Turn on ReSound hearing aid, pause 2 seconds, then turn on Baha sound processor

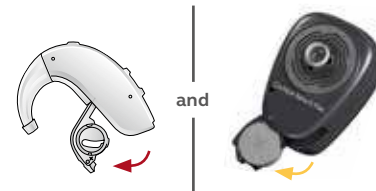


TV streamer – pairing with ReSound hearing aid and Baha sound processor

- 1 Plug power and audio cables into the Cochlear TV Streamer or ReSound TV Streamer 2 and connect to audio source



- 2 Turn off ReSound hearing aid and Baha sound processor



- 3 Press pairing button

Note: The TV streamer LED will flash yellow while device is in pairing mode for 20 seconds.



- 4 Turn on ReSound hearing aid, pause 2 seconds, then turn on Baha sound processor



Microphone or TV streamer – activating streaming

After your hearing devices have been successfully paired with your accessories according to the instructions above, you can easily stream audio from them by following these simple steps:

- 1 Turn on ReSound Multi Mic / Cochlear Mini Microphone 2/2+ or ReSound TV Streamer 2 / Cochlear TV Streamer

- 2 If not already on, turn on the ReSound hearing aid and then the Baha sound processor. To stream to one or both hearing devices, follow either option A or option B

Note: Streaming must be started and stopped on each hearing device individually.

Note: For option B, streaming must be started and stopped on each hearing device individually via the correct remote control.

OPTION A:

ReSound hearing aid

To enable wireless audio streaming press and hold the push button for 3 seconds.



Baha sound processor

To enable wireless audio streaming press and hold the program button for 3 seconds.



OPTION B:

ReSound Remote Control 2 and Baha Remote Control 2

Press the streaming button on the remote control.



Streaming button

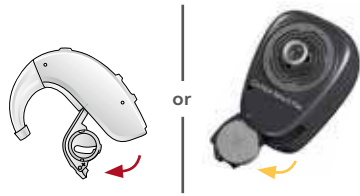
Note: if your hearing device is paired with more than one wireless accessory press the streaming button on the remote control once, twice, or three times to toggle between the paired accessories.

Wireless pairing & streaming guide

Phone Clip – pairing with ReSound hearing aid or Baha sound processor

Note: Cochlear Phone Clip and ReSound Phone Clip+ cannot be paired bimodally.

1 Turn off ReSound hearing aid or Baha sound processor



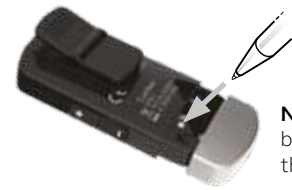
2 Turn on Cochlear Phone Clip or ReSound Phone Clip+ and remove cap

Note: Ensure Phone Clip is charged.



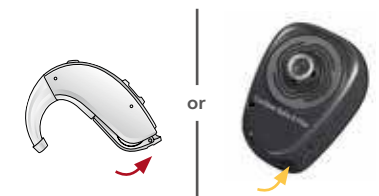
3 Press pairing button

Note: The LED will flash yellow for 20 seconds while device is in pairing mode.



Note: The pairing button is found under the silver cap.

4 Turn on ReSound hearing aid or Baha sound processor

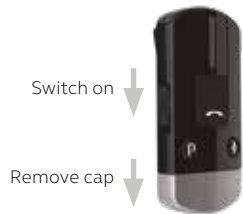


Phone Clip – pairing with mobile phone

Note: The Phone Clip must be paired to a Bluetooth source before it can be used.

1 Turn on Cochlear Phone Clip or ReSound Phone Clip+ and remove cap

Note: Ensure Phone Clip is charged.

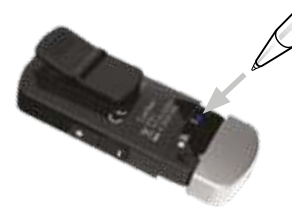


2 Turn on mobile phone's Bluetooth® function

Refer to your mobile phone user guide for instructions.

3 Press blue Bluetooth pairing button

Note: During pairing mode the LED will turn blue.



4 On your mobile phone search for new Bluetooth devices and select "Hearing Aid Phone"

Your Phone Clip should now be paired with your mobile phone.

Note: If your mobile phone asks for a pass code, enter '0000' (four zeros). If your mobile phone asks which Bluetooth service you wish to enable, select "Headset".

Phone Clip – streaming calls

Incoming calls:

- To answer a call, press once.
- To decline a call, double-click.

During a call:

- To transfer a call started on your phone to the Phone Clip, press once.
- To put a call on hold, press and hold for 2 seconds.

Making a call:

- To redial the last number, double-click.
- To activate voice dialling, press and hold for 2 seconds.



Phone Clip – streaming music

Tip! Use the volume controls on the Phone Clip to change the volume on your hearing aid and sound processor.

Connect the device to the Phone Clip using Bluetooth and start playing music on the device. You will hear the audio streaming from the device. To stop streaming, stop playing music on the device.



Cochlear and ReSound collaborate in the Smart Hearing Alliance to develop the world's smartest bimodal hearing solutions.

Cochlear Bone Anchored Solutions AB, Konstruktionsvägen 14,
435 33 Mölnlycke, Sweden Tel: +46 31 792 44 00
www.cochlear.com

Please seek advice from your health professional about treatments for hearing loss. Outcomes may vary, and your health professional will advise you about the factors which could affect your outcome. Always read the instructions for use. Not all products are available in all countries. Please contact your local Cochlear representative for product information. In Australia, Baha bone conduction implant systems are intended for the treatment of moderate to profound hearing loss.

Cochlear, Hear now. And always, Nucleus, Kanso, Baha, the elliptical logo, and marks bearing an ® or ™ symbol, are either trademarks or registered trademarks of Cochlear Limited or Cochlear Bone Anchored Solutions AB (unless otherwise noted).

The Bluetooth® word mark and logos are registered trademarks owned by Bluetooth SIG, Inc. and any use of such marks by Cochlear Limited is under license. ReSound is a trademark of GN Hearing A/S.

ReSound is part of the GN group. GN makes life sound better through intelligent audio solutions.

© Cochlear Bone Anchored Solutions AB 2022. All rights reserved. 2022-01
D1919118-V1