

## Smart bimodal pairing with an iOS device

You can stream sound simultaneously to your Nucleus Kanso® 2 Sound Processor and compatible ReSound hearing aid from a compatible iOS device\*.

**Important:** your clinician must link your hearing devices and assign your hearing aid to the correct ear before you can pair to your iOS device.

### Pairing your sound processor and hearing aid to your compatible iOS device

- 1 Turn off the ReSound hearing aid and Kanso 2 Sound Processor.
- 2 To pair your sound processor and hearing aid with your compatible iOS device, ensure Bluetooth® is enabled. Then, open the 'Settings' menu.
- 3 Select 'Accessibility'.
- 4 Scroll down and select 'Hearing Devices'.
- 5 Turn on your hearing aid and then turn on your sound processor.  
Your iOS device will then search for your hearing devices and display them in the 'Devices' section.
- 6 Select your name when it displays on the screen.
- 7 Select 'Pair' to confirm pairing. You will see this message twice.
- 8 During the pairing process you will see a blue flash for 4 seconds, followed by 6 beeps.  
**Note:** Don't start to stream audio until pairing is finished.
- 9 Your sound processor and hearing aid will both be listed under 'your hearing device name' and you should now be able to stream sound directly to both.

#### Pairing to more than one iPhone, iPad or iPod touch

You can pair your sound processor and hearing aid with up to five compatible iOS devices, but you can only control them from one iOS device at a time. To manually change connection between devices you have previously paired to, turn off Bluetooth on the connected device, and turn on Bluetooth on the device you want to connect to. Your hearing devices will then automatically connect to the second device.



Cochlear and ReSound collaborate in the Smart Hearing Alliance to develop advanced and innovative hearing solutions for you.



Cochlear Limited  
1 University Ave, Macquarie University, NSW 2109, Australia  
Telephone: +61 2 9428 6555

Hear now. And always



resound.com

GN Hearing A/S  
Lautrupbjerg 7, 2750 Ballerup, Denmark  
Telephone: +45 45 75 11 11

GN Making Life Sound Better

**ReSound is part of the GN group. GN makes life sound better through intelligent audio solutions.**

Please seek advice from your health professional about treatments for hearing loss. Outcomes may vary, and your health professional will advise you about the factors which could affect your outcome. Always read the instructions for use. Not all products are available in all countries.

The Cochlear Nucleus 7 and Kanso 2 Sound Processors are compatible with iPhone, iPad and iPod touch. The Cochlear Nucleus Smart App is available on App Store and Google Play. For compatibility information visit [www.cochlear.com/compatibility](http://www.cochlear.com/compatibility).

Cochlear, Hear now. And always, Nucleus, Kanso, the elliptical logo and True Wireless are either trademarks or registered trademarks of Cochlear Limited.

ReSound is a trademark of GN Hearing A/S.

Selected ReSound hearing aids are compatible with iPhone, iPad and iPod touch. The ReSound Smart app and ReSound Smart 3D app are available on App Store and Google Play. For compatibility information visit [www.resound.com/compatibility](http://www.resound.com/compatibility).

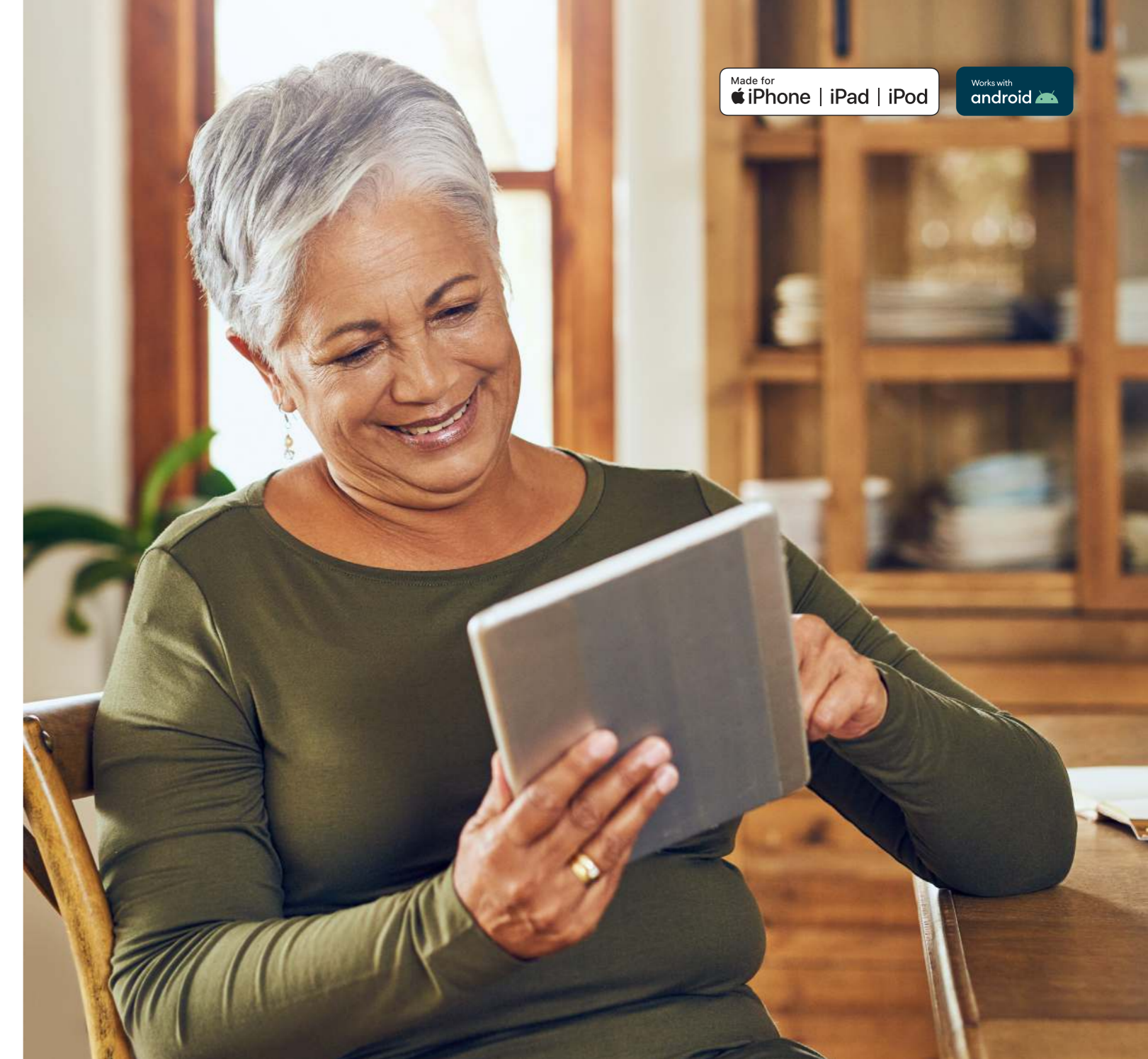
Android, Google Play and the Google Play logo are trademarks of Google LLC.

Apple, the Apple logo, FaceTime, Made for iPad logo, Made for iPhone logo, Made for iPod logo, iPhone, iPad Pro, iPad Air, iPad mini, iPad and iPod touch are trademarks of Apple Inc., registered in the U.S. and other countries. App Store is a service mark of Apple Inc., registered in the U.S. and other countries.

The Bluetooth® word mark and logos are registered trademarks owned by Bluetooth SIG, Inc., and any use of such marks by Cochlear Limited is under license.

© Cochlear Limited 2021. D1826387 V1 2021-04

\* For compatibility information and devices visit [cochlear.com/compatibility](http://cochlear.com/compatibility) and [resound.com/compatibility](http://resound.com/compatibility)



# Bimodal wireless pairing and streaming guide

Cochlear™ Nucleus Kanso® 2 Sound Processor and ReSound hearing aids



Smart Hearing Alliance



## Smart bimodal pairing with an Android™ device

You can stream sound simultaneously to your Kanso® 2 Sound Processor and compatible ReSound hearing aid from a compatible Android device\*. Each hearing device should be individually paired for Android streaming.

**Important:** your clinician must link your hearing devices and assign your ReSound hearing aid to the correct ear before you can pair to your Android device.

### ReSound hearing aid

To pair with a compatible Android device you will need the ReSound Smart 3D™ app version 1.5.0 or higher and ReSound firmware version 10042.4200 or later. You can find your firmware version in the Smart 3D app by selecting **My ReSound**, then **Hearing aid software updates**.

#### New users of the ReSound Smart 3D app

- 1 Open the app and select 'Get Started'.
- 2 Review and agree to the Terms and Conditions.
- 3 Enable location services.
- 4 Enable Bluetooth.
- 5 Turn hearing aid 'OFF' and 'ON'.
- 6 The app will identify your hearing aid.
- 7 Restart your hearing aid (if rechargeable press button for 5 seconds).
- 8 Select 'Continue'. Your hearing aid is now paired and ready to stream.

#### Existing users of the ReSound Smart 3D app v. 1.5.0

If you are already using ReSound Smart 3D v. 1.5.0 with a paired Android device when your phone manufacturer enables the Audio Streaming for Hearing Aids (ASHA) functionality, follow these steps.

- 1 Swipe down from the top on the screen to open the Settings menu, then hold the Bluetooth icon for 2 seconds.
- 2 Hold the settings icon for 'ASHA's Hearing Aids' for 2 seconds.
- 3 Select 'Forget'.
- 4 Open the 'More' menu and select 'Pair new hearing aids', then go to step 5 in the instructions above for New users of the ReSound Smart 3D app.

## Kanso 2 Sound Processor

To pair with a compatible Android device you will need to use the Nucleus Smart App.

**Note:** When trying to pair or connect your sound processor with the app, you may experience interference from some devices (e.g. microwave ovens, wireless routers or TV streamers). If this happens, move away from the interference and try again.

- 1 Have your processor ready.
- 2 Switch on Bluetooth on your Android smartphone.
- 3 Run Nucleus Smart App.
- 4 Swipe through the Welcome screens.
- 5 Create your Cochlear account or login if you have an account.
- 6 The Pair your processor(s) screen displays. Select 'Continue'.
- 7 In the Location popup, select 'OK'.
- 8 Enable location services.
- 9 The Detect your processor(s) screen displays.
  - Turn off your processor with 3 quick and firm taps. Pause 5 seconds.
  - Then Turn on your processor with 2 quick and firm taps.
- 10 When your processor displays, select it to start pairing. Note that your paired hearing aid may not display on this screen.
- 11 The Paired processor screen displays when pairing is complete. Select 'Continue'.
- 12 When the Verify processor screens display:
  - A. Remove your sound processor, then double tap to turn it on.
  - B. Place your processor on your head and select 'Continue'.
- 13 Select an option in the Sound Processor(s) screen and if prompted, enter user details.
- 14 The Enable data sync screen displays. If you would like to use this feature, select 'Enable'.
- 15 When the Audio streaming screen displays, select 'Enable'. Your sound processor will turn off for a few moments.
- 16 If other sound processor(s) are already paired or streaming to your smartphone then it's time to 'Forget' them now. Follow the screen prompts to 'Forget' the processor(s), then select the back button to return to the Nucleus Smart App.
- 17 Wait while the Connecting to processor screen displays.
- 18 If you have Touch sounds enabled on your smartphone, the Touch sounds screen displays. Follow the screen prompts to disable Touch sounds, then select the back button to return to the Nucleus Smart App.
- 19 When the Setup complete! screen displays, select 'Continue'.

## Bimodal pairing with wireless accessories

You can stream to your Kanso® 2 Sound Processor and ReSound hearing aid from a ReSound Multi Mic, Cochlear™ Mini Microphone 2/2+, ReSound TV Streamer 2 or Cochlear TV Streamer.

### Pairing your sound processor and hearing aid with a wireless accessory

**Microphone**

- 1 Turn off ReSound hearing aid and Kanso 2 Sound Processor.
- 2 Turn on microphone. **Note:** Ensure microphone is charged.
- 3 Press the pairing button once for channel 1, twice for channel 2, three times for channel 3. **Note:** The LED will blink orange for 20 seconds while device is in pairing mode.
- 4 Turn on your hearing aid and then turn on your sound processor. The LED will flash blue to show pairing was successful. You can now begin streaming to one or both hearing devices.

**TV Streamer**

- 1 Plug power and audio cables into TV streamer and connect to audio source. Turn on TV streamer.
- 2 Press pairing button. **Note:** The LED will blink orange for 20 seconds while device is in pairing mode.

### Control streaming to your sound processor and hearing aid from a wireless accessory

**Note:** Streaming must be started and stopped on each device individually.

**Both devices**

Through Apple's accessibility menu you can control streaming to both the sound processor and hearing aid. Triple click the home button to access controls for turning on a streaming source and to adjust volume.#

**Kanso 2 Sound Processor**

Nucleus Smart App  
Under 'Audio Sources' select the wireless accessory you are streaming from.

**ReSound hearing aid**

Press and hold the push button on your ReSound hearing aid.

**Cochlear CR310 Remote Control (optional)**

Press and hold the Telecoil button for 2 seconds, then release.

**ReSound Remote Control 2 (optional)**

Press the streaming button on this remote control.

\* For compatibility information and devices visit [cochlear.com/compatibility](http://cochlear.com/compatibility) and [resound.com/compatibility](http://resound.com/compatibility)

# For more information refer to the Apple Accessibility Quick Guide.